

## Designed For Security: The First-ever Fixed Sony Megapixel Network Camera Delivers Excellent Sensitivity and 1.3 Megapixel Resolution with an Advanced Progressive Scan CCD Employing ExwavePRO Technology

Sony introduces a powerful new addition to the Sony network camera lineup, the SNC-CM120 Megapixel Network Camera. The first Sony camera of this type – a fixed megapixel camera – the SNC-CM120 has been specifically designed for security applications. It incorporates an advanced progressive scan CCD with ExwavePRO™ technology, providing extremely clear and detailed images for surveillance monitoring applications.

A typical requirement for surveillance monitoring is excellent image quality even in a dimly lit environment.

Therefore, unlike conventional network cameras which incorporate progressive scan CCDs with primary color filters, the SNC-CM120 uses a complementary color filter to provide amazingly bright and high-resolution images in low light conditions.

What's more, its unique Light Funnel function provides high sensitivity to deliver extremely bright images even when monitoring moving objects at night.

This new camera also incorporates sophisticated features such as Intelligent Motion Detection, Constant Bitrate Algorithm, and flexible Gamma Curve Settings. These features provide you with not only high-quality images, but also intelligent and efficient operational flexibility. Providing high sensitivity levels in a compact and slim body inherited from CCTV cameras, the SNC-CM120 is a perfect choice for your most demanding surveillance monitoring applications.



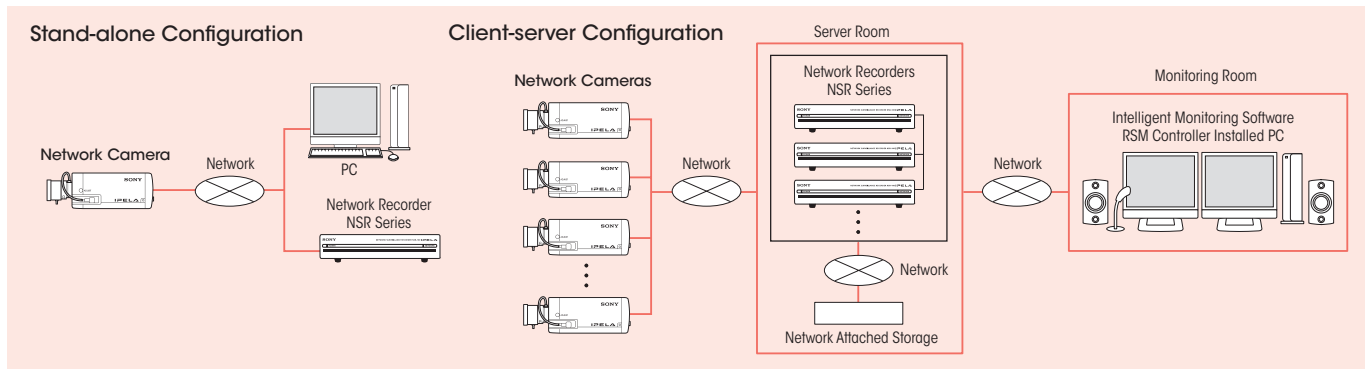
### Megapixel Network Camera SNC-CM120

#### Features

- **1/3-type Progressive Scan CCD with ExwavePRO Technology**
  - Progressive scanning and complementary color filters provide extremely high sensitivity levels and clear, crisp images in both day and night environments.
- **1.3 Megapixel — High Resolution**
  - Ideal for use at building entrances and parking lots where detailed images such as faces and car license plates are required.
- **Selectable Compression Formats: MPEG-4 and JPEG**
- **High Frame Rate of 30 fps at 640 x 480 and 15 fps at 1280 x 960/768 x 576**
- **Light Funnel Function for High Sensitivity<sup>1</sup>**
  - Unlike systems that use slow shutter speeds to provide bright images, the Light Funnel mechanism combines two adjacent pixels vertically and horizontally delivering extremely bright images even when monitoring moving objects at dusk. This function can be activated automatically in response to surrounding light conditions or to a pre-specified time schedule.
  - Light Funnel technology allows you to see moving images more clearly in low light conditions versus slow shuttering, where moving images tend to be blurred.
- **Ten Preset JPEG Picture-quality Settings With Constant Bitrate Algorithm**
- **Variable Gamma Settings for High-contrast Images**
  - Six preset gamma curves.
- **Horizontal Resolution**
  - 600 TV lines.
- **Solid PTZ Function**
  - Allows users to electronically pan, tilt, and zoom within the camera's field of view.
  - Used in conjunction with the Motion Detection function, the camera can track moving objects.
- **Cropping Function**
  - Full-resolution megapixel images can be cropped freely to accentuate a monitoring area and reduce data size.
- **Compact and Slim**
  - Design inherited from CCTV cameras.
- **DC Servo IR Auto Iris Lens Capability**
  - Ideal for both indoor and outdoor use.
- **Slow Shutter Mode**
- **Dual-encoding Capability (MPEG-4/JPEG)**
- **Day/Night Function • Bi-directional Audio**
- **DEPA™-enabled — Intelligent Video Analytics**
- **Intelligent Motion Detection (IMD)**
- **Sensor In/Alarm Out Ports • IEEE802.1X Compliant**
- **Analog Video Output**
  - Ideal for use when adjusting the camera viewing angle during installation.
- **Variety of Power Options: AC 24 V, DC 12 V, or PoE (Power over Ethernet).**

\*1 When the Light Funnel function is activated, the image resolution is 640 x 480 (VGA).

## System Configurations

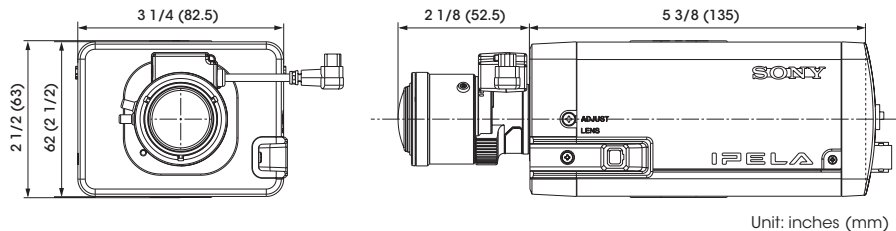


## Specifications

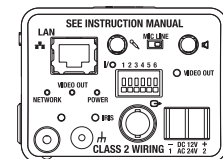
Camera	
Image device	1/3-type Progressive Scan CCD with ExwavePRO Technology
Number of total pixels	Approx. 1,320,000
Number of effective pixels (H x V)	Approxor. 1,250,000 (1,296 x 966)
Electronic shutter	1 to 1/10,000 s
Auto gain control (AGC)	On/Off (0 dB to +36 dB)
Exposure control	Auto, Backlight compensation, Gamma settings
White balance modes	ATW, ATW Pro
Lens type	Vari-focal zoom lens
Zoom ratio	2.1x optical zoom (2x digital zoom)
Horizontal viewing angle	100.7 to 47°
Focal length	f=2.8 to 6.0 mm
F-number	F1.3 (wide), F1.9 (tele)
Minimum object distance	300 mm
Image	
Image size (H x V)	
JPEG	1280 x 960, 960 x 720, 768 x 576, 640 x 480, 384 x 288, 320 x 240
MPEG-4	640 x 480, 384 x 288, 320 x 240
Maximum frame rate	
JPEG	15 fps (1280 x 960 / Light Funnel OFF), 30 fps (640 x 480 / Light Funnel ON)
MPEG-4	15 fps (640 x 480 / Light Funnel OFF), 30 fps (640 x 480 / Light Funnel ON)
Audio	
Audio compression	G.711/G.726 (40, 32, 24, 16 Kb/s)
Network	
Protocols	TCP/IP, ARP, ICMP, HTTP, FTP, SMTP, DHCP, DNS, NTP, RTP/RTCP, SNMP
Number of clients	10
Authentication	IEEE802.1X

Interface	
Ethernet	10Base-T/100BASE-TX (RJ-45)
Analog video output	BNC x1, 1.0 Vp-p, 75 Ω
I/O port	Sensor in x 1, Alarm out x 2
External microphone input/Line input	Mini-jack x1 (Mic in: monaural, 2.2 K 2.5V plug-in power, Line in: monaural)
Analog video output	
Signal system	NTSC/PAL
Horizontal resolution	600 TV lines
S/N ratio	more than 50 dB (AGC OFF, Weight ON)
Min. illumination	Color : 0.6 lx (50IRE, F1.3, AGC ON 30 dB) 0.1 lx (Light Funnel ON, 50IRE, F1.3, AGC ON 36 dB) B/W : 0.01 lx (50IRE, F1.3, AGC ON 30 dB) 0.01 lx (Light Funnel ON, 50IRE, F1.3, AGC ON 36 dB)
General	
Weight	Approx. 1 lb 9 oz (700 g)
Dimensions (W x H x D)	3 1/4 x 2 1/2 x 7 1/2 inches including Lens (82.5 x 63 x 187.5 mm)
Power requirements	PoE (IEEE-802.3 af)/AC 24 V/DC 12 V
Power consumption	max. 8.0 W
Operating temperature	14 to 122 °F (-10 to 50 °C)
Storage temperature	-4 to 140 °F (-20 to 60 °C)
System requirements	
Operating system	Microsoft, Windows Vista®, Microsoft Windows® XP
Processor	Intel Pentium IV® 3 GHz or higher, Intel Core 2 Duo 2 GHz or higher
Memory	1 GB or more
Web browser	Microsoft Internet Explorer® Ver. 6.0 or higher
Supplied accessories	
CD-ROM (User's guide, IP setup program, Audio Upload Tool, Privacy Masking Tool, Video Player, Custom Homepage Installer, Easy Setup Guide), Installation manual, Wire rope	

## Dimensions



## Rear Panel



**SONY**

Sony Electronics Inc.  
1 Sony Drive  
Park Ridge, NJ 07656  
www.sony.com/security

S-IP2028 (MK10492V1)

© 2008 Sony Electronics Inc. All rights reserved.  
Reproduction in whole or in part without written permission is prohibited.  
Features and specifications are subject to change without notice.  
Non-metric weights and measurements are approximate.  
Sony, IPELA, ExwavePRO, ExwaveHAD, and DEPA are trademarks of Sony.  
Windows, Windows Vista and Internet Explorer are trademarks of Microsoft Corporation.  
Pentium IV is a trademark of Intel Corporation.

Printed in USA (8/08)