



Technical Specifications

System <ul style="list-style-type: none"> CPU: VVTK-1000 SoC Flash: 8MB RAM: 64MB Embedded OS: Linux 2.4 	Networking <ul style="list-style-type: none"> 10/100 Mbps Ethernet, RJ-45 Protocols: IPv4, TCP/IP, HTTP, UPnP, RTSP/RTP/RTCP, IGMP, SMTP, FTP, DHCP, NTP, DNS, DDNS, and PPPoE
Pan/Tilt/Zoom <ul style="list-style-type: none"> 18x optical zoom 	Alarm and Event Management <ul style="list-style-type: none"> Triple-window video for motion detection One D/I and one D/O for external sensor and alarm Event notification using HTTP, SMTP, or FTP Local recording of MP4 file
Lens <ul style="list-style-type: none"> Focal length: f=4.1 ~ 73.8 mm, auto iris, focus range: 290 mm (wide), 800 mm (tele) to infinity F-number: F1.4 (wide), F3.0 (tele) Embedded removable IR-cut filter for day & night function 	Security <ul style="list-style-type: none"> Multi-level user access with password protection IP address filtering
Angle of View <ul style="list-style-type: none"> 2.8° ~ 48° (horizontal) 	Users <ul style="list-style-type: none"> Camera live viewing for up to 10 clients
Shutter Time <ul style="list-style-type: none"> 1/2 sec. to 1/10000 sec. 	Dimension <ul style="list-style-type: none"> 147 mm (D) x 78 mm (W) x 85 mm (H)
Image Sensor <ul style="list-style-type: none"> SONY 1/4" progressive scan CCD sensor in VGA resolution 	Weight <ul style="list-style-type: none"> Net: 824 g
Minimum Illumination <ul style="list-style-type: none"> 1.61 Lux (F1.4, 1/30s) 0.38 Lux (F1.4, 1/30s, without IR-cut filter) 	LED Indicator <ul style="list-style-type: none"> System power and status indicator System activity and network link indicator
Video <ul style="list-style-type: none"> Compression: MJPEG & MPEG-4 Streaming: <ul style="list-style-type: none"> Simultaneous dual-streaming MPEG-4 streaming over UDP, TCP, or HTTP MPEG-4 multicast streaming MJPEG streaming over HTTP Supports 3GPP mobile surveillance Frame rates: <ul style="list-style-type: none"> MPEG-4: Up to 30/25 fps at 640x480 MJPEG: Up to 30/25 fps at 640x480 	Power <ul style="list-style-type: none"> 12V DC 24V AC Power consumption: Max. 7.6W 802.3af compliant Power-over-Ethernet
Image Settings <ul style="list-style-type: none"> Adjustable image size, quality, and bit rate Time stamp and text caption overlay Flip & mirror Configurable white balance, brightness, sharpness, and exposure Automatic, manual or scheduled day/night mode Backlight compensation (BLC) 	Approvals <ul style="list-style-type: none"> CE, LVD, FCC, VCCI, C-Tick
Audio <ul style="list-style-type: none"> Compression: <ul style="list-style-type: none"> GSM-AMR speech compression, bit rate: 4.75 kbps ~ 12.2 kbps MPEG-4 AAC audio encoding, bit rate: 16 kbps ~ 128 kbps Interface: <ul style="list-style-type: none"> Built-in microphone External microphone input Supports two-way audio via SIP protocol Supports audio mute 	Operating Environments <ul style="list-style-type: none"> Temperature: 0 ~ 50 °C (32 ~ 122 °F) Humidity: 20%~80% RH
	Viewing System Requirements <ul style="list-style-type: none"> OS: Microsoft Windows 2000/XP/Vista Browser: Mozilla Firefox, Internet Explorer 6.x or above Cell phone: 3GPP player Real Player: 10.5 or above Quick Time: 6.5 or above
	Installation, Management, and Maintenance <ul style="list-style-type: none"> Installation Wizard 2 16-CH recording software Supports firmware upgrade
	Applications <ul style="list-style-type: none"> SDK available for application development and system integration
	Warranty <ul style="list-style-type: none"> 24 months

All specifications are subject to change without notice. Copyright © 2008 VIVOTEK INC. All rights reserved.

Network Camera IZ7151

18x Zoom · Day&Night
Progressive Scan CCD



VIVOTEK IZ7151, incorporates a fully integrated Sony 18x optical zoom lens and progressive scan CCD sensor, is an all-in-one network camera for 24-hour day and night surveillance. With the built-in 18x optical zoom, this camera can flexibly zoom in on small or distant objects and remotely monitor warehouses, construction sites, parking lots, office or apartment buildings and more - with exceptional accuracy and clarity.

Featuring the day/night function, the IR-cut filter is able to be removed while lighting darkens and automatically turns the mode of color (day time/bright lighting) into monochrome (night time/dark or low lighting), down to 0.38 lux. It also comes with a RS-485 interface for scanners or pan/tilts driver connection, which is designed for a cost-effective alternative with pan/tilt/zoom functions as a professional speed dome.

Additionally, this camera is fully loaded with many sophisticated features such as 3GPP mobile surveillance, Power over Ethernet, and SIP two-way audio, free-bundled 16-Ch recording software etc., allowing you to build up a reliable, future-proof IP surveillance system with ease. No matter how wide range your applications would be, just have a closer, crystal clear view with VIVOTEK IZ7151 from anywhere over the network.

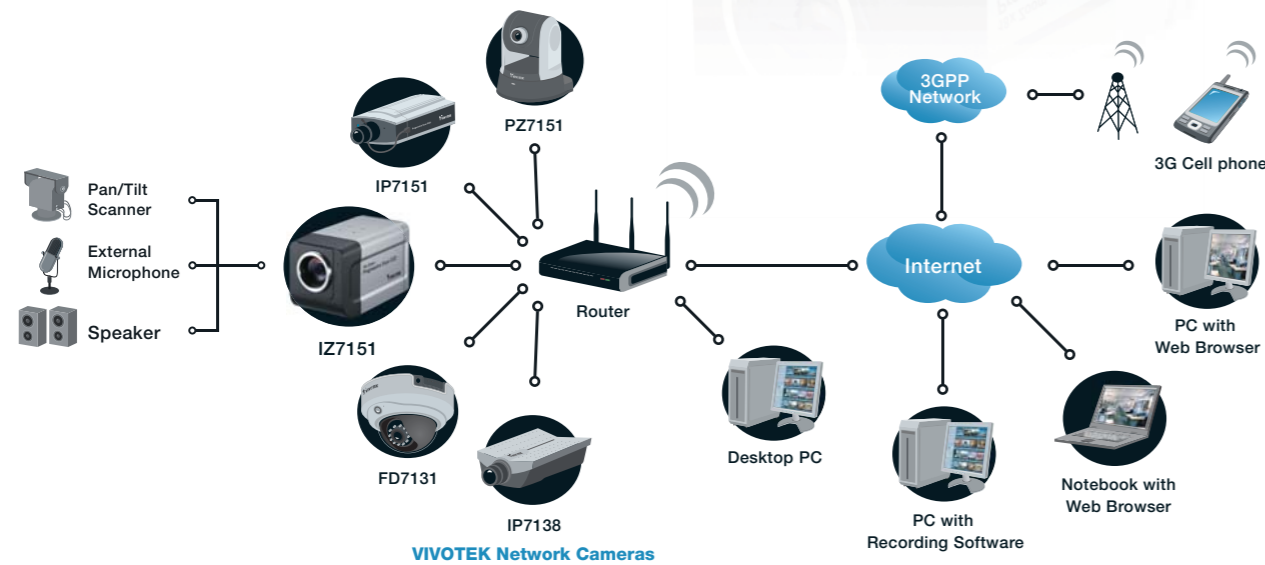
Product Features

- SONY Progressive Scan CCD Module in VGA Resolution
- 18x Zoom Lens
- Removable IR-cut Filter for Day & Night Function
- Real-time MPEG-4 and MJPEG Compression (Dual Codec)
- Supports Dual Streams Simultaneously
- 3GPP Mobile Surveillance
- Built-in 802.3af Compliant PoE
- Two-way Audio via SIP Protocol
- RS-485 Interface for Scanners, Pan/Tilts
- Digital I/O for External Sensor and Alarm
- Back Light Compensation



VIVOTEK's Self-developed SoC

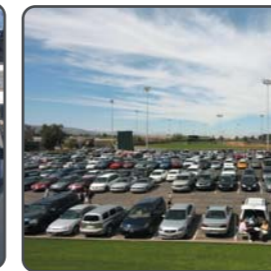
System Overview



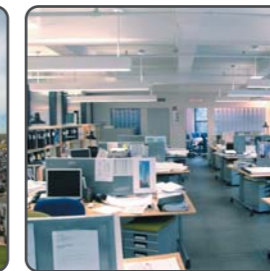
Versatile Applications



Stations



Parking lots



Offices

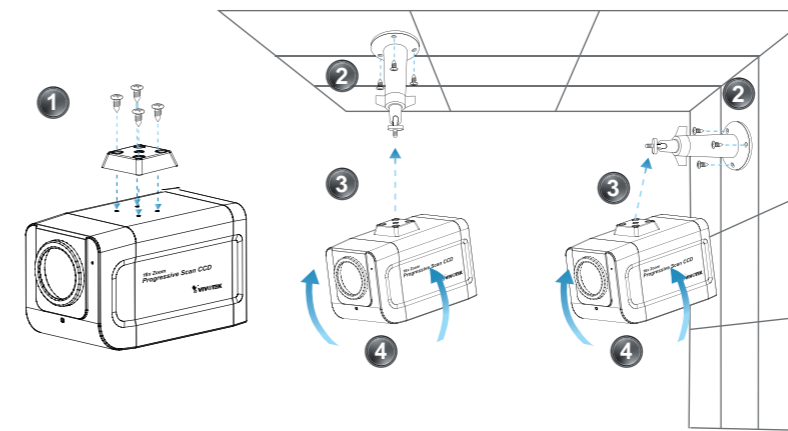


Warehouses



Factories

Easy Installation



Accessories



Pan/Tilt Scanner



PoE Injector



Enclosure



Infrared

Technical Zone



Progressive Scan CCD Sensor

Optimum solution for shooting high-speed moving objects

The progressive scan CCD sensor effectively offers an excellent solution for shooting high-speed moving objects. It can clearly capture images of moving objects that traditional interlaced-scan techniques could not achieve. Unlike interlaced-scan techniques, progressive scanning scans all the lines simultaneously so as to present razor-sharp, clear, and high-resolution snapshots in all circumstances.



18x Optical Zoom Lens

Providing unprecedented image quality

Utilizing Sony 18x optical zoom lens, VIVOTEK IZ7151 allows you to have close-up images with exceptional detail and effectively extends your eyesight. You can easily and quickly zoom in on distant objects or any tiny target with unprecedented high quality even when enlarged.



Power over Ethernet

Allowing power and signals to be transmitted over only one Ethernet cable

With 802.af PoE support, VIVOTEK IZ7151 can be powered through the original network-cabling infrastructure, thus cutting costs and cabling to the overall installation.

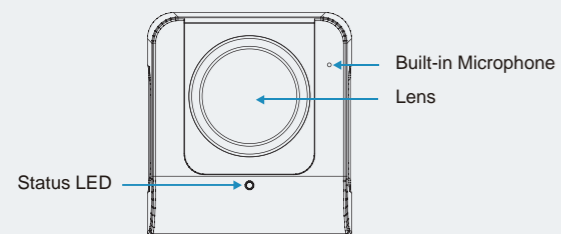


Day & Night Function

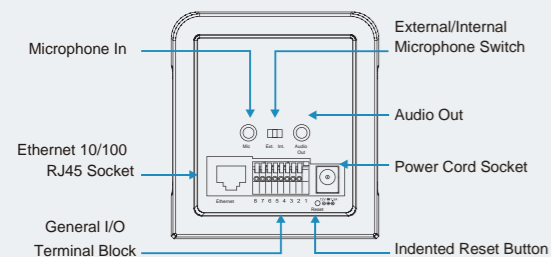
The best solution for 24-hour surveillance

VIVOTEK SD7151 is equipped with a removable IR cut filter, which will automatically be removed at night time to bring the IR light into the sensor to maximize the low light sensitivity. The camera will switch automatically from color to black and white, assuring optimal image quality at all times.

Front View



Rear View



VVTK-1000

VIVOTEK's Self-developed SoC

VIVOTEK's self-developed SoC enhances the implementation of more powerful surveillance functions, greater transmission efficiency, and guarantee the highest quality in real-time audio-video transmission.

